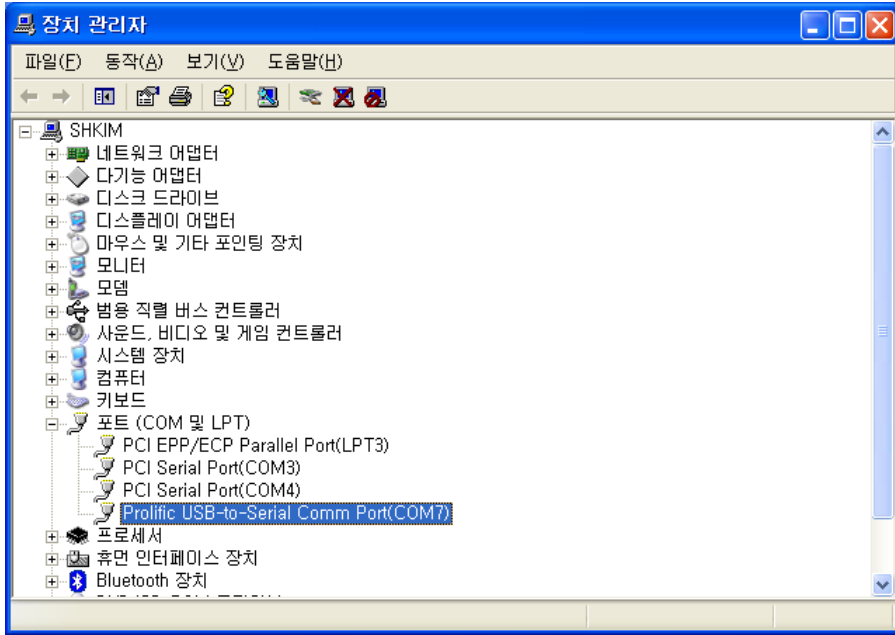
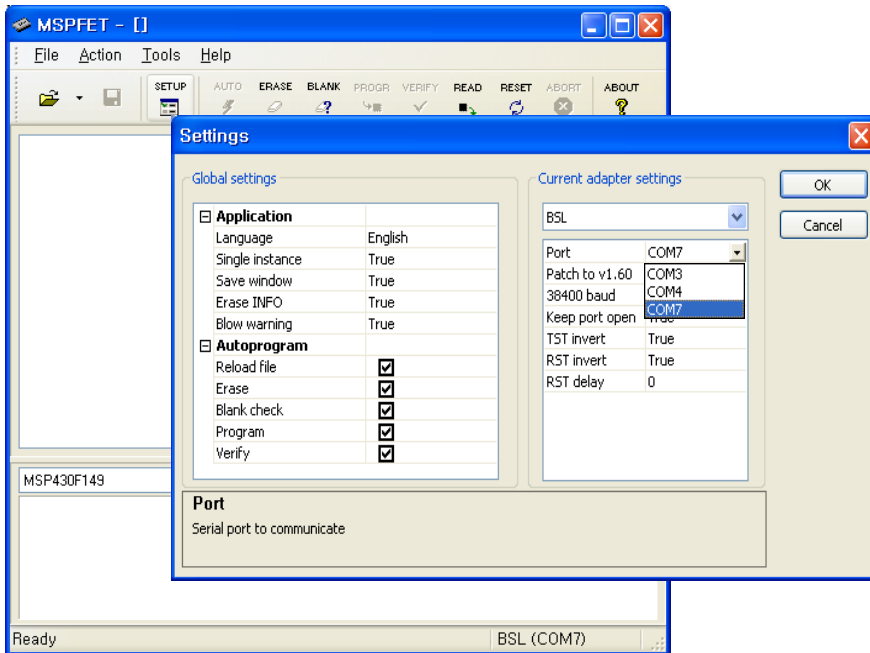
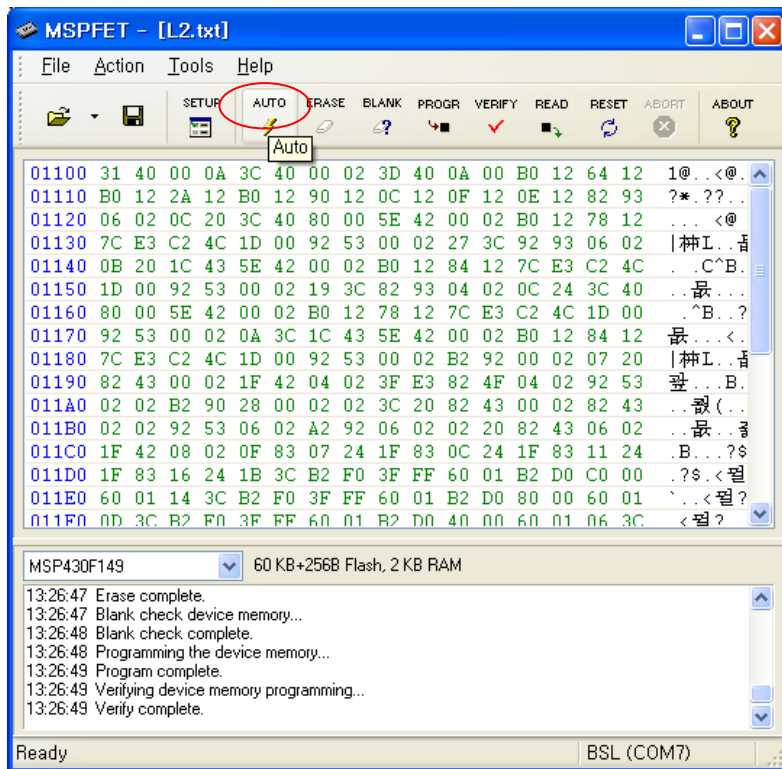
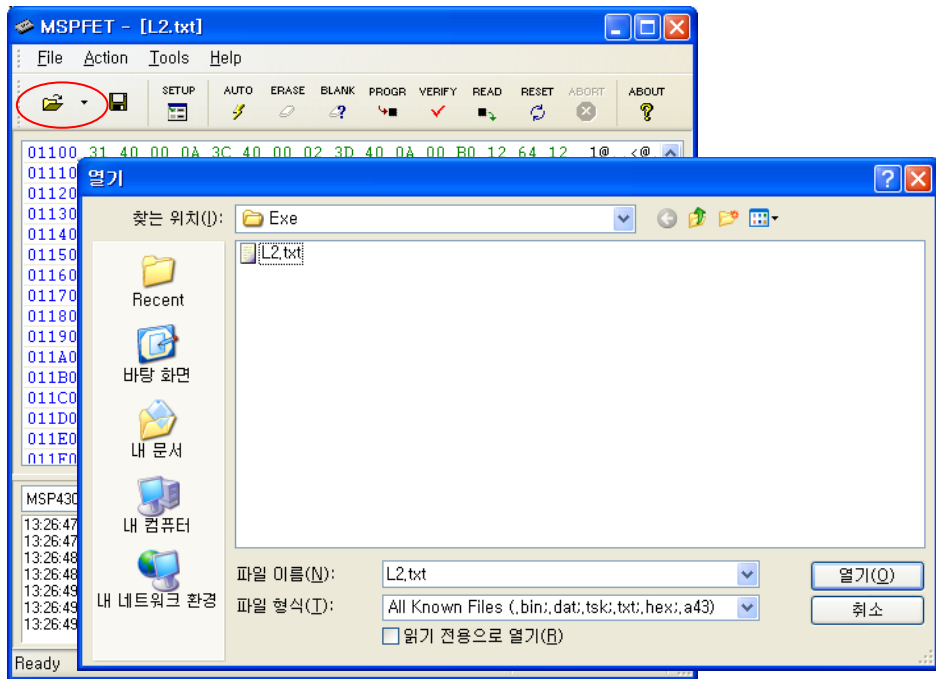



USB 드라이버 설치후 장치관리자에서 시리얼포트를 확인합니다.




USB 드라이버 설치후 장치관리자에서 시리얼포트를 확인합니다.



















 제공자료

 USB드라이버

 회로도

 예제 프로그램

 시리얼다운로더-BSL

			
TI표준참고용 예제	RTC-DS1302	PS2_인터페이스	LED테스트 4가지
			
LED(HX1838)	LCD-12864	LCD-1602	AT24C16(EPPROM)
			
AD	온도-DS18B20	시리얼포트 1 3종류	시리얼포트 0 3종류